



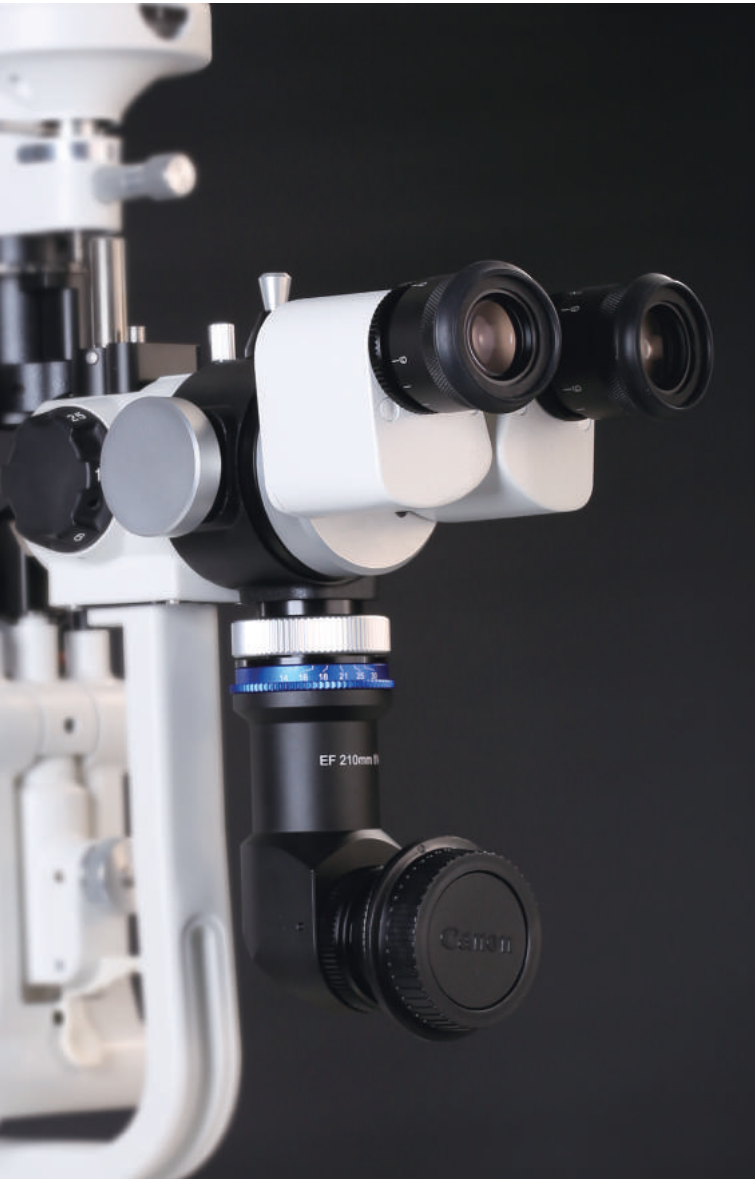
Digital Slit Lamp Microscope DC/Image System

Image Speaks Louder Than Words



Quality Optics

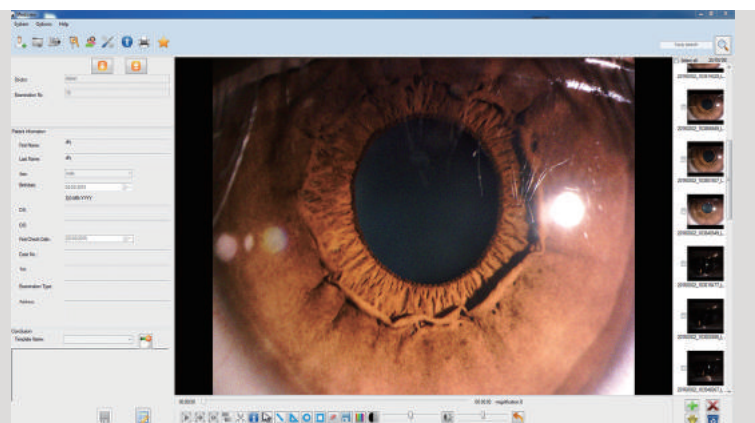
Uniquely designed optical system makes MediWorks slit lamps be able to project very sharp and homogeneous slits and apertures. Doctors can obtain closer observation through MediWorks slit lamps and see all kinds of pathologies clearly. As a result, the diagnosis becomes easier for the doctors who can dedicate more time and energy to the treatment for the patients.



Adjustable Aperture and Fine Focusing

The aperture adjustment ring on the digital camera adaptor provides 6 levels of adjustable apertures. This meets the different demands for depth of view and brightness.

The fine focusing ring which also on the digital camera adaptor enable doctors to do fine focusing on the camera so that the image showed on camera can be as similar to the eyepiece image as possible.



Mediview Image Process Software

(Available for Image System)

Mediview Image Process Software is a professional software to record and edit images and videos captured by MediWorks slit lamps. Mediview can build up and search patient cases conveniently. The images can be edited, measured and compared with the software. Mediview is an essential tool for doctors' daily work with slit lamps.

Accessories



Beam Splitter

(Available for S260/S260S/S280/S280S/S350/S350S/S360/S360S)

The beam splitter is used to split the light into digital camera. MediWorks beam splitter transmits 70% light to the camera and 30% to the eyepieces.



Digital Camera Adaptor (Canon DSLR)

(Available for S260/S260S/S280/S280S/S350/S350S/S360/S360S)

The digital camera adaptor is used to connect slit lamps with Canon DSLR cameras. It has aperture and focus adjustment rings.



Backlit Background Illumination Module

(Available for S260/S260S/S280/S280S/S350/S350S/S360/S360S/S390H/S390L)

The backlit background illumination module will provide extra illumination to the eyes thus improving the quality of digital imaging.

Image System Specification

System Specification

Accessories	Beam Splitter, Digital Camera Adaptor(Canon DSLR), Backlit Background Illumination Module, Mediview Image Process Software
Functions	Still image (up to 18 mega pixel) acquisition, Patient information management, Inspection report output
Image Acquisition Device	Digital SLR Camera (eg. Canon EOS 550D/600D/700D/750D)
Viewfinder	Microscope eyepieces, Camera viewfinder, Camera LCD, Computer screen
Transmission Interface	USB
Available Slit Lamp Microscope	S260/S260S/S280/S280S/S350/S350S/S360/S360S
Options	Computer, Printer

System Requirements Guidelines

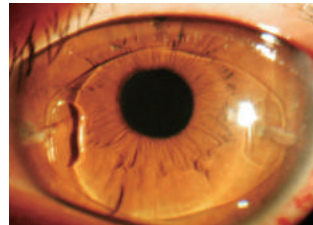
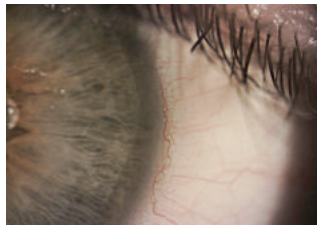
Computer Configuration

CPU	2.00GHz above
Memory	1024MB or above
Screen Resolution Ratio	1280 X 1024 or above
Printer	A4 colorful printer (recommended) B5, B4 and A5 4 x 6" colorful printers are available

Software Configuration

Operating System	Windows 7 (32/64bit), Windows 8.1 (32/64bit) Windows 10 (32/64bit)
Graphics Card Setting	Color quality:24bit or above

Image Gallery



Specification

Microscope	DC/Image System
Microscope Type	Galilean Type
Magnification Change	Revolving Drum(5 or 3 steps)
Total Magnification	6X, 10X, 16X, 25X, 40X
Eyepieces	12.5X
Angle between Eyepieces	13°
Pupillary Adjustment	52mm-78mm
Diopter Adjustment	±6D
Field of View	Ø34.7mm, Ø22mm, Ø13.5mm, Ø8.5mm, Ø5.5mm
Slit Illumination	
Slit Width	0~14mm continuous (slit becomes a circle at 14mm)
Slit Length	1~14mm continuous
Aperture Diameters	Ø14mm, Ø10mm, Ø5mm, Ø3mm, Ø2mm, Ø1mm, Ø0.2mm
Slit Angle	0°~180°
Slit Inclination	5°, 10°, 15°, 20°
Filters	Heat-absorbing filter, ND filter, Red-free filter, Cobalt Blue filter
Lamp	3V LED Module (S360 / S360S); 6V/20W Halogen Lamp (S350 / S350S)
Luminance	≥60KLX (S360 / S360S); ≥50KLX (S350 / S350S)
Instrument Base	
Longitudinal Movement	110mm
Lateral Movement	110mm
Vertical Movement	30mm
Fine Base Movement	15mm
Chin-rest	
Vertical Movement	80mm
Fixation	LED
Power Supply	
Input Voltage	220V/110V~±10%
Input Frequency	50Hz/60Hz
Power Consumption	10VA (max) (S360 / S360S); 30VA (max) (S350 / S350S)
Output Voltage	Lamp 6V, Fixation 3V
Packaging	
Dimension	770mm x 470mm x 570mm(L/W/H)
Gross weight	25kg
Net weight	17kg
Accessories	

Beam Splitter, Digital Camera Adaptor(Canon DSLR), Backlit Background Illumination Module
Image System only: Left/Right Eye Distinguishing Module, Mediview Image Process Software



CE FDA Approval

Shanghai MediWorks Precision Instruments Co.,Ltd.

Add:Zone A,2nd Floor,No.69,Lane 1985,Chunshen Road,Minhang District,
Shanghai,200237,China

Tel: +86-21-54260421 54260423 Fax:+86-21-54260425

Email: international@mediworks.biz

Follow Us on



www.mediworks.biz

201608B *Subject to change in design or specification without advance notification

Details Make the Difference