

OPHTHALMIC DIAGNOSTIC STRIPS

In Medical Grade Tyvek Pouches

Schirmer Strips

CE
2460



Sterile Ophthalmic strips for Dry Eye test

Packaging:
Each box contains 100 sterile strips.



Indications:

- Used for measurement of tear production
- Gauged for easy reading

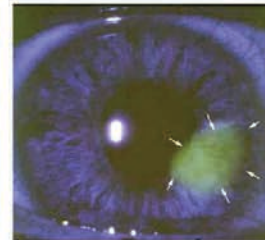
Fluorescein Sodium Ophthalmic Strips

CE
2460



Composition (per strip):
Each strip is impregnated with 1.0 mg of Fluorescein Sodium

Packaging:
Each box contains 100 sterile strips.



Indications:

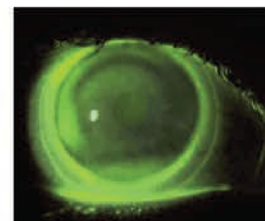
- For Applanation Tonometry
- For evaluating Contact Lens fitting

High Molecular Fluorescein Sodium Ophthalmic Strips



Composition (per strip):
Each strip is impregnated with 0.5 mg of high molecular Fluorescein Sodium

Packaging:
Each box contains 100 sterile strips.



Indications:

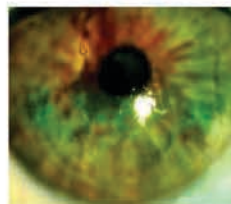
- For Applanation Tonometry
- For evaluating Contact Lens fitting

Lissamine Green Ophthalmic Strips



Composition (per strip):
Each strip is impregnated with 1.5 mg of Lissamine Green

Packaging:
Each box contains 100 sterile strips.



Indications:

- To stain preferentially damaged or devitalized cells
- To indicate any dry patches, as well as any mucus-deficient or damaged Corneal Epithelial cells
- It does not stain healthy, proliferating Ocular surface cells and has minimal effect on cell viability

Rose Bengal Ophthalmic Strips



Composition (per strip):
Each strip is impregnated with 1.5 mg of Rose Bengal

Packaging:
Each box contains 100 sterile strips.



Indication:

- It stains dead or degenerated Epithelial cells of Cornea & Conjunctiva.

biotech
VISION CARE

BIOTECH VISION CARE PVT LTD | Block 1, Abhishree Corporate Park, Opp. Swagat Bunglow BRTS Stop
Bopal - Ambli Road, Ahmedabad - 380 058 Gujarat India. | Tel: +91 79 66823000

Email: indiasales@biotechhealthcare.com | intlsales@biotechhealthcare.com | www.biotechhealthcare.com